

WHAT DID YOUR STAFF DO TODAY?

The logo for 3ami, with the number '3' in white and 'ami' in red.

Monitoring Audit System

**3ami MAS increases
productivity and helps
you to stay compliant
with the law:**

**Freedom of
Information Act**

Sarbanes Oxley

Software Licensing

*"Software that can not only
monitor every keystroke and
action performed at a PC but
also be used as legally binding
evidence of wrong-doing..."
(BBC 25 Jan 2005)*



- Work?
- Chat?
- Play games?
- Send offensive emails?
- Steal company information?
- Visit illegal websites?
- Install illegal software?



Simple to install and use, MAS records every action that takes place, not just Internet usage but in every application opened and all text typed.

Easy to view logs and video playback of screen-captures enable you to see (and prove) exactly who did what 5 minutes or five weeks ago!

Putting you in control...

The Easy Way to Gain Control of the Workstations within your Enterprise

Large organisations, spread over multiple locations can take advantage of MAS Enterprise, which comes bundled with additional tools and functionality to enable comprehensive data analysis.

Enterprise Features include: -

- **Built in SQL interface**
- **Collation of data** from multiple MAS installations
- **Scheduled reports** – always available when you need them
- **Enhanced Screen Capture** allows the administrator to customise the rate of screen capture down to 1 per second
- **'Hot Zones'**. At risk Applications, Folders and Files can be designated as 'Hot Zones', which when accessed by a user triggers Enhanced Screen Capture to create a complete visual record of activity
- **Real Time Alerts** allow you to immediately respond, stopping internal breaches of security as they happen
- **Share security permissions tool** Built into Administrator Console - automatically sets relevant permissions



Enterprise Support

Worldwide support is available through your local reseller or direct from 3ami

Nothing escapes MAS. MAS records with an accuracy and integrity that can be used as legally binding evidence of wrongdoing or proof of compliance.


MAS operates on all client workstations, laptops and terminal servers recording all user activity - applications opened, text typed, email sent and received, documents opened, websites visited, printing, file copying to removable devices.

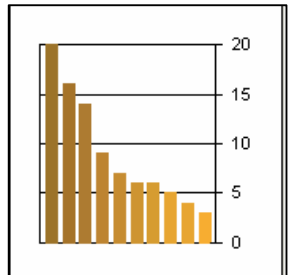
The information is then securely encrypted and stored in a central (or multiple) secure location(s). Laptops, which are disconnected from the network, continue to be monitored and the data collected is immediately updated on reconnection.

Application	Time	Active Window
>>USER LOGON>>	12:40:37	Administrator
3ami MAS (5.0.151)	12:40:37	Initialising
3ami MAS	12:40:37	Started
Windows Explorer	12:40:38	Program Manager
Internet Explorer	12:40:45	Google - Microsoft Internet Explorer
Internet Explorer	12:40:57	tesco - Google Search - Microsoft Internet Explore
Internet Explorer	12:41:00	Tesco.com - Microsoft Internet Explorer
Internet Explorer	12:41:07	http://www.tesco.com/popups/PopupWK42.asp - M
Internet Explorer	12:41:08	Tesco.com - Microsoft Internet Explorer
Internet Explorer	12:41:14	Travel insurance - Tesco Personal Finance - Micr
Internet Explorer	12:41:25	BBC - bbc.co.uk homepage - Home of the BBC on 1
Internet Explorer	12:41:31	BBC World Service Home Page - Microsoft Interni

Application	Time	Active Window
>>USER LOGON>>	18:39:01	Administrator
Internet Explorer	18:39:03	Microsoft Word
Microsoft Outlook	18:39:05	Feb 2006.doc - Microsoft Word
Microsoft Outlook	18:39:08	Windows Explorer
Microsoft Outlook	18:39:21	> DRIVE ADDED > G:\ (Removable Disk (G:))
Windows Explorer	18:39:29	G:\
	18:39:31	> FILECOPY > FILES CREATED ON REMOVABLE DEVICE (USB MEMORY)
Microsoft Word for Win	18:39:35	Feb 2006.doc - Microsoft Word
Microsoft Word for Win	18:39:38	Print
	18:39:45	> PRINTING > Microsoft Word - Feb 2006.doc (2 pages on Visage eXPert PD
eXPert PDF viewer	18:39:46	Visagesoft eXPert PDF - Microsoft Word - Feb 2006.doc

3ami Monitoring Audit System - Active





# EUDORA	20%
# HELPMATIC PRO ...	16%
# PAINT SHOP PRO 6	07%
# VWINDOWS EXPL...	06%
# ADOBE READER ...	06%
# REALPLAYER	05%
# INTERNET EXPLO...	04%

Screen Capture

Play back activity like a movie! In the Enterprise version, screen capture rate can be altered according to which applications are in use, providing intensive targeting of user activity.



MAS makes a record of all hardware installed on each machine every day. This information provides up to date or historic information on hardware inventory; licensing compliance, upgrade suitability and detailed accounts of a machine's history.

Benefits of MAS Audit:

- Machines may be analysed individually, by department or by the entire organisation.
- MAS roll out enables a full inventory of all of your company's hardware and software.
- Licensing for software products can quickly be compared to licences owned.
- Machines with unauthorised or unnecessary software can be quickly identified
- Theft of memory, PCI devices etc. can be detected and traced.

23/02/2006 22:52:49 (646E-ED3E)

Hardware

- GenuineIntel 1.7 GHz
- Microsoft Windows 2000 - Service Pack
- Total Memory 523 Mb
- Free Memory 213 Mb
- Memory Free 41 %
- A:\
- C:\
 - Total Space 5844 Mb
 - Free Space 742 Mb
- D:\
- E:\
- F:\
- G:\
- Z:\
- Devices
 - PRINTER - Visage eXPert PDF (Port:)
 - PRINTER - hp deskjet 3600 series (P)
 - DISPLAY - Default Monitor
 - DISPLAY - Dell E771a
 - FDC - Floppy disk drive
 - IDE - LITE-ON LTR-24102M

Software

- ActiveDiary
- Adobe Acrobat 5.0
 - Version 5.0
- Adobe Acrobat 7.0.1 and Reader 7.0.1
- Adobe Reader 7.0
- Alarm Clock v1.0
- Business Plan Pro 4.0
 - Version 4.0
- csXImage 2.3
- DivX Codec
- DivX Player
- Eudora

Date	Change
2006-02-25	Software (Game Maker 6.1) was added
2006-02-25	Software (GTA San Andreas) was added
2006-02-25	Removable Drive (G:\) was removed
2006-02-23	Software (Windows 2000 Hotfix - KB905915) was added
2006-02-23	Software (Windows 2000 Hotfix - KB908519) was added
2006-02-23	Software (Windows 2000 Hotfix - KB908523) was added
2006-02-23	Software (Security Update for Windows Media Player (KB911564)) was added
2006-02-23	Software (Security Update for Windows Media Player 9 (KB911565)) was added
2006-02-23	Software (Windows 2000 Hotfix - KB912919) was added
2006-02-23	Software (QuickPar 0.9) was added
2006-02-23	Software (PADGen 2.0.1.22) was added
2006-02-23	Software (DirectX 9 Hotfix - KB839643) was removed
2006-02-23	Software (101 VB.NET Samples) was removed
2006-02-21	Removable Drive (G:\) was added
2006-02-21	Software (101 VB.NET Samples) was added
2006-02-20	Removable Drive (G:\) was removed
2006-02-20	Network Drive (H:\) was removed
2006-02-20	Network Drive (I:\) was removed
2006-02-20	Network Drive (J:\) was removed

Windows Event Logs

MAS keeps an up to date copy of the Windows Event Logs for every machine. Unlike viewing Event Logs remotely, the event log of any machine may be viewed and is searchable with MAS even when the machine is switched off. Using the MAS SQL database, any event can be traced by its description, ID number or application.

Activity | Screens | Audit | History | Events

Application (2) | Security (0) | System (23) | Selected Date | All

Event Type	Time/Date Written	Event ID	Source	User Name	Description
Error	23/02/2006 16:59:52	3210	NETLOGON		Failed to authenticate with W3AM
Information	23/02/2006 17:27:32	135	Removable Storage Service		Received a device interface REM
Information	23/02/2006 17:53:03	135	Removable Storage Service		Received a device interface REM
Error	23/02/2006 17:53:57	17	Removable Storage Service		RSM cannot manage library Phys
Information	23/02/2006 18:01:27	135	Removable Storage Service		Received a device interface REM
Error	23/02/2006 17:59:52	17	Removable Storage Service		RSM cannot manage library Phys

Optional System Tray Icon



- Informs users of MAS presence

Optional "Allow Users to view their own data"

- Users may click the icon to view their own log files.

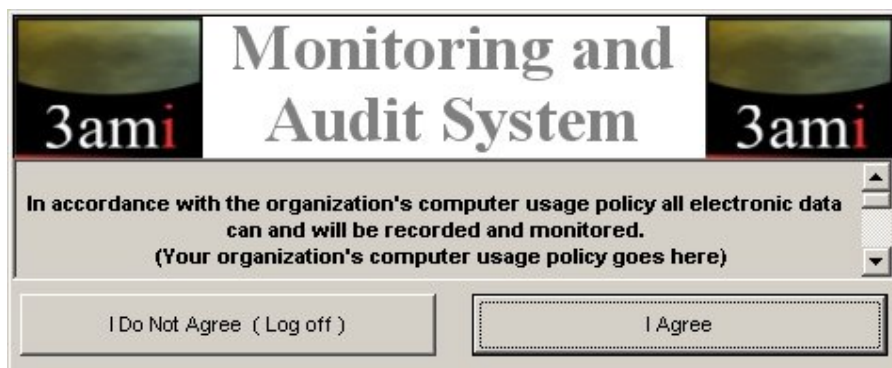


Optional masking of passwords typed

- Prevents discovery of network or online passwords.

Optional "Logon Disclaimer"

- Editable disclaimer text.
- Displays corporate logo.
- Users must agree to monitoring before they may use the workstation.

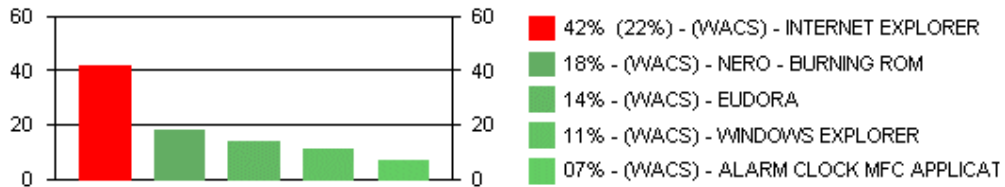


Benefits:

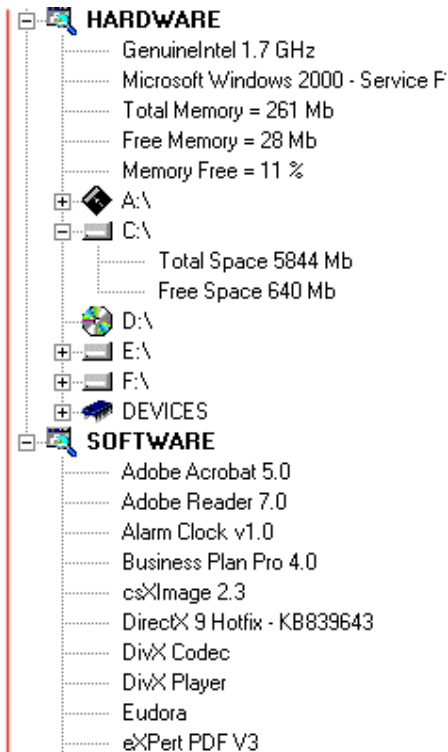
- Enables HR to enforce computer usage policy in an employee friendly manner.
- Visible deterrent against illegal or inappropriate behaviour.
- Open access to employees encourages workforce acceptance and greatly improves productivity.
- Users may recover lost data through keystroke capture.

If an employee on an average salary of £8ph (\$15ph) spends one hour a day on work-unrelated activities, the total yearly cost to the business is (1 hour x 240 days) x £8 (\$15) = £1920 (\$3600) per year. The cost to a business with 100 users is a staggering £192,000 (\$360,000)!

MAS pays for itself in less than 2 working weeks!



Application	% Usage	Total Hours	Date
✗ (WACS) - INTERNET EXPLORER	42% (22%)	1.17 Hours	02 Feb 05
✓ (WACS) - NERO - BURNING ROM	18%	30 Minutes	02 Feb 05
✓ (WACS) - EUDORA	14%	23 Minutes	02 Feb 05
✓ (WACS) - WINDOWS EXPLORER	11%	18 Minutes	02 Feb 05
✓ (WACS) - ALARM CLOCK MFC APPLICATION	07%	12 Minutes	02 Feb 05
✓ (WACS) - MICROSOFT® HTML HELP EXECUTABLE	03%	5 Minutes	02 Feb 05
✓ (WACS) - VIRTUAL BASIC	02%	5 Minutes	02 Feb 05



The risk of legal liability is unquantifiable!

Company executives can be personally responsible for unlicensed software, illegal material and their employees' inappropriate behaviour on company equipment.

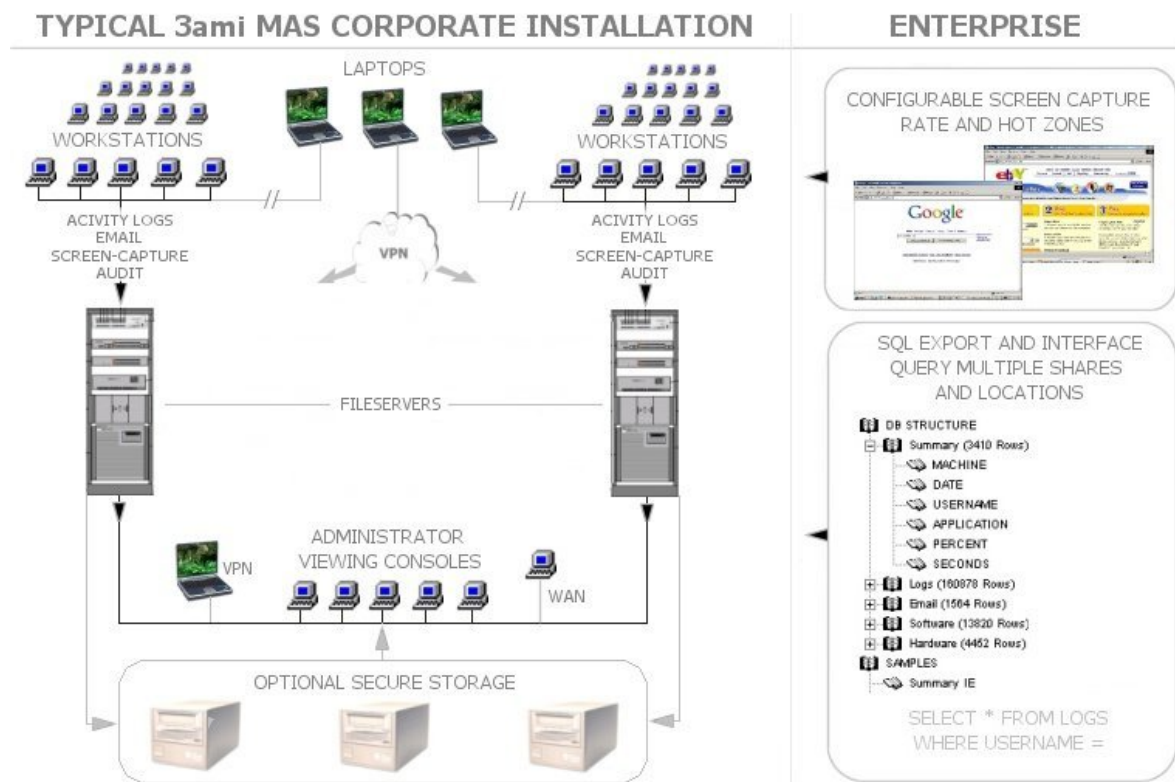
"70 - 80% of computer misuse is internal to the organisation". Firewall and anti-virus protection is accepted as vital, but the greater internal threat from employees is often overlooked.

Scalability

MAS is scaleable on an office, department or location basis.

A large-scale MAS installation is an integrated collection of separate installations, which can be based on departments, offices or multiple companies.

Installations are linked via their SQL databases. Detailed or summary reports may then be automatically generated for the entire organization or any parts of it, even if those parts are on different continents!



System Requirements

- **Windows 95/98/NT4/ME/2000/XP**
 - *MAS works on Terminal Services*
 - *(Windows Server versions are **not** required but may be used)*
- **15Mb disk space on client workstations**
- **200Mhz processor, 32Mb Ram recommended minimum...**
- **Disk space as required on shared folder workstation/server**

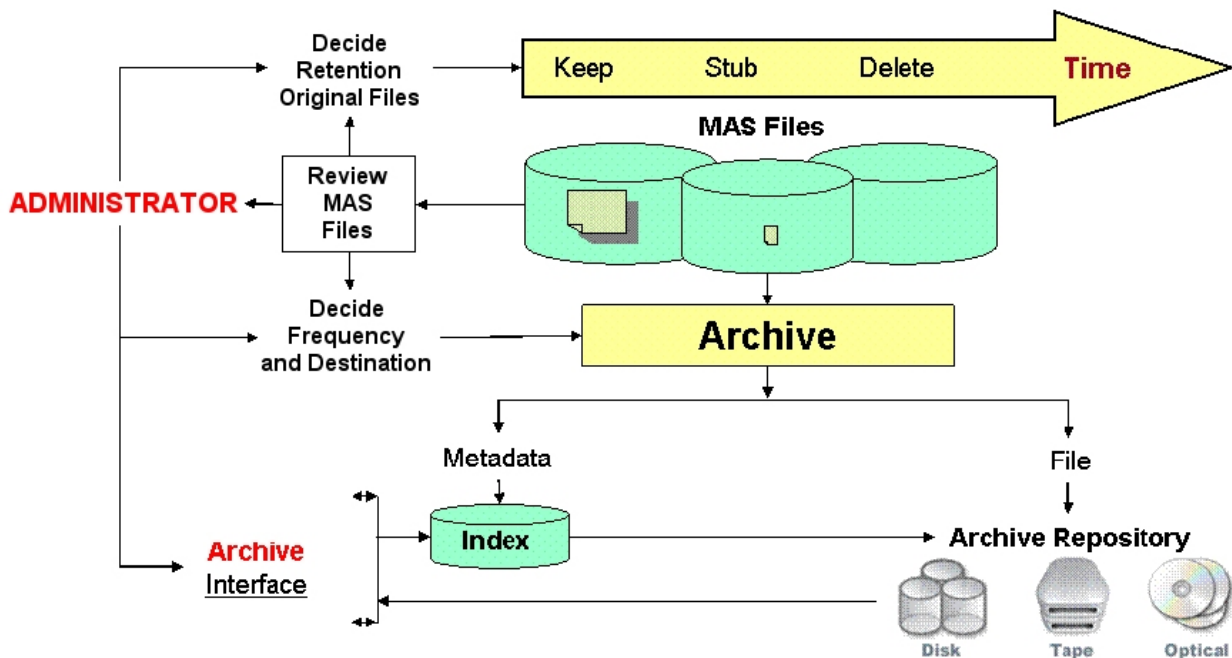
"Software that can not only monitor every keystroke and action performed at a PC but also be used as legally binding evidence of wrong-doing...." (BBC Online)

But how do you protect the collected data against insider tampering? One answer, MAS Secure Storage, ensures that it cannot be tampered with and where it will be fully monitored over time - even if that time is over 30 years.

This is the task of MAS Secure Storage. Based on HT FileStore, which is supplied by BridgeHead Software*, MAS Secure Storage allows the MAS administrator to set policies which place the files collected by MAS into a read only, protected archive. This archive can be on any storage device or combination of storage devices including non-erasable, non-rewritable WORM media for absolute protection against tampering.

A key advantage of MAS Secure Storage is that it takes multiple copies of the data within the archive and as such it is self-protecting against data loss. This allows the original data to be safely removed from primary storage over time but without loss of data availability or data security.

MAS Secure Storage (HT FileStore)



*BridgeHead Software are specialists in storage management software. They specialize in providing backup and archive software for application vendors to embed in their own solutions. This allows the application vendor to focus on their area of excellence and rely on BridgeHead to focus on the storage element. BridgeHead has provided software for use alongside Dell, EMC, IBM and HP as well as Meditech, Amicas and Fujimed. www.BridgeHeadSoftware.com

Records:

- User Logons
 - Time of logon
 - Time of logoff
- Applications Used
 - All applications opened
 - Duration of application use
 - Records child (MDI) windows and dialogs
 - Configurable for Application Servers (i.e. Novell Zenworks)
- Keystrokes Typed
 - Can be configured not to record for specified users
 - Works with all email clients
 - Works with all chat clients
- Websites Visited
 - Records title of web page and popups
 - Works with all browsers
- Regular Screen Captures
 - Taken at random <> 1 minute intervals*
 - Can be played back like video
 - Small size for low network traffic and storage
 - Hot Zones for targeted intensive monitoring*
- Incoming and Outgoing Emails (Microsoft Outlook and Lotus Notes)
 - Immediately copies entire email and attachments as soon as they arrive or are sent
- User attempts to "End Task" the MAS Process
- User attempts to alter log files
- Worldwide Languages

Audits:

- Hardware
 - Processor - type and speed
 - Memory – total and free
 - Hard disks – total space and free space
 - Removable disks
 - Hardware devices
 - USB devices
- Software
 - All installed software
 - Operating system
- Reports Historical Changes in Hardware and Software
 - Addition or removal of memory
 - Addition or removal of hard disks
 - Addition of removable devices including USB
- Snapshot Audit of Entire Network
 - Total machines grouped by processor
 - Total machines grouped by C:\ drive free space
 - Total machines grouped by total memory
 - Total machines grouped by operating system
 - Total instances of all installed software
- Windows Event Logs
 - Stores Event Logs, which may be viewed even when the client machine is disconnected.

Alerts*

- Three tier alert levels*
- Immediate notification sent to specified workstations*
- Optional closing of application on trigger*

Reporting:

- Overall usage of applications
 - Entire network
 - By machine
 - By user
- Exception reporting for users who exceed average usage
- Daily summaries of user activity
- Reporting directly to web browser
- SQL Export & Query Interface*

Security:

- Cannot be stopped with Windows Task Manager
- Temporary log files on laptop computers disconnected from the network are protected from deletion or alteration
- Log files encrypted (Blowfish).
- May be invisible or visible to the user
- Recorded passwords may be hidden from the Administrator and retrievable only by 3ami

Storage:

- Direct storage to configurable shared folder
 - Share may be hidden
 - Share may be "Write Only"
 - Integrates with Bridgehead Software for secure archiving
- Requires approximately 2 Mb per machine per day (at maximum settings)

Laptop Storage:

- Data is cached locally when disconnected
- Text data is written to share on reconnection

System Requirement:

- Microsoft Windows
 - 95/98/ME/NT4/2000/XP
 - Servers: NT/2000/2003
 - Terminal Server
 - Installation on servers is **NOT** a requirement (except Terminal Servers)
- All Microsoft supported networks
- Linux file shares

Machine and Network Overhead:

- No noticeable performance drop on workstations > 266Mhz
- Minimal network traffic
 - <>2mb transfer per day per machine
 - Works over dialup VPN
- Requires 10Mb storage on workstation

Implementation:

- Simple rollout using SMS, login script, Active directory or our own tools.
- Self maintaining - no maintenance required

* Enterprise Version Only